

LOW PRESSURE BLADDER ACCUMULATORS TYPE EBV

Volumes 0,5 ÷ 200 lt

TECHNICAL DATA STANDARD EXECUTION

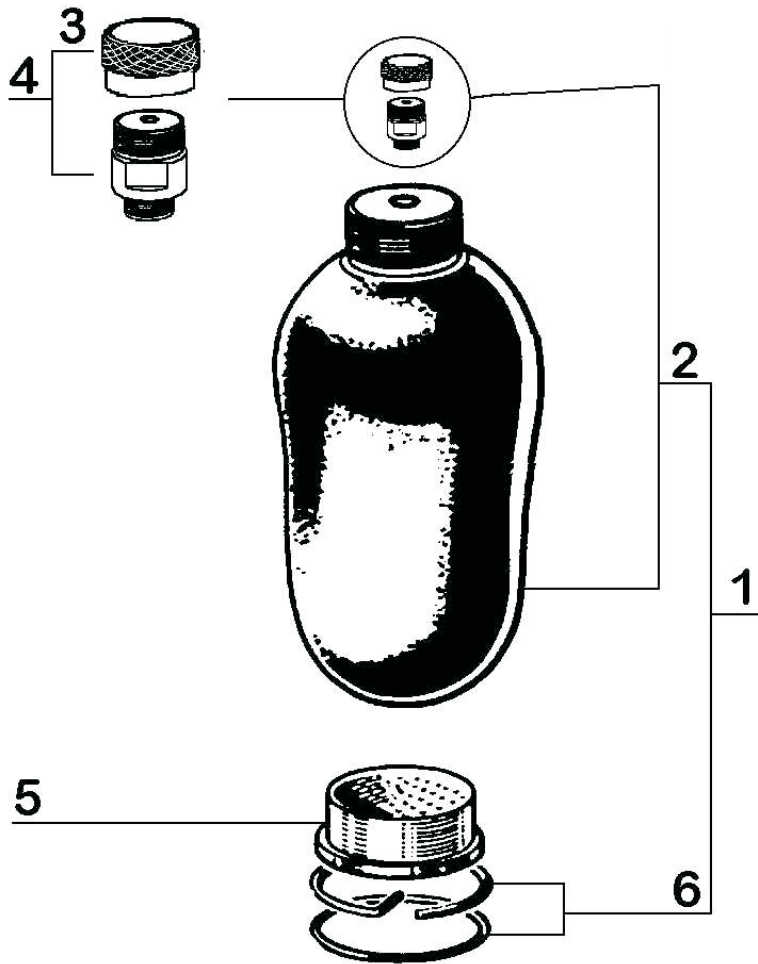
Type	Bladder accumulator constructed in Seamless welded or constructed by welding a top and a bottom ends to a tip. There is a carbon steel or stainless steel antiextrusion strainer at the bottom on the fluid port connection.
Flow "Q"	Oil flow described in the table below are only for a vertical type mounted For oil flow increase or different position mounting contact Comer.
Nitrogen precharge "P0"	Between 0,9 minimum. Press. and 0,2 maximum pression.
Fluids	Hydraulic Oil. Special bladder materials compatible with many fluids, are available on demand.
Mounting	It is recommended in vertical position. For other positions ask Comer. Consider a space of approx. 200 mm for of charging kit type VGU over the inlet gas screw valve..
Temperature	standard -15 ÷ 80 °C. Other ranges ask Comer.
Fixation	It is totally prohibited to weld any fixation on the shell. Fixing are at your disposal in Comer's accessories Catalogue
Safety Blocs	DI series, realized for the safety, closed and discharge from the circuit.
Riductions	2"-1"; 1/2"-1/4"; 3/4"-3/8"; 1"1/4"-3/4"
Certifications	PED "CE", ASME.
Special executions	Stainless Steel, Kanigen.



Model	Volume lt	Max Pressure bar	Max flow lt/min	Weight kg	A mm	B mm	C mm	ØD mm	Ød mm	F GAS	ØH mm	SW
EBV 0,5-50	0,5	50	450	2	243	49	27	90	16	2" gcf	70	65
EBV 1-80/90	1,0	80	267	5	264	44	27	116	16	2" gcf	68	
EBV 2,5-80/90	2,3	80	267	10	438	44	27	116	16	2" gcf	68	
EBV 5-80/90	5,0	80	267	17	821	44	27	116	16	2" gcf	68	
EBV 10-40/90	10	40	1000	22	528	53	65	222	22	3" 1/2 gcf	118	
EBV 20-40/90	20	40	1000	35	839	53	65	222	22	3" 1/2 gcf	118	
EBV 32-40/90	32	40	1000	53	1349	53	65	222	22	3" 1/2 gcf	118	
EBV 50-40/90	50	40	1000	70	1864	53	65	222	50	3" 1/2 gcf	118	
BHV 100-40/90	90	40	3000	135	1313	149	92	372		3" 1/2 gcf	236	
EBV200-40/90	200	40	3000	221	2524	149	92	372		3" 1/2 gcf	236	

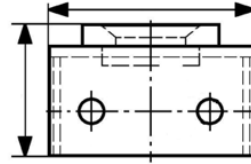
LOW PRESSURE BLADDER ACCUMULATORS TYPE EBV

Volumes 0,5 ÷ 200 lt



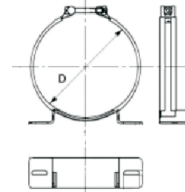
SERIAL BRACKET ASSEMBLY

designed for specific use on accumulator installation, both clamps and bracket are supplied complete with rubber support to ensure rigid mounting



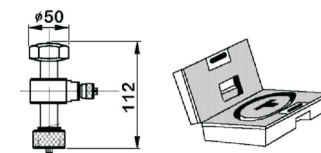
SERIAL CLAMP ASSEMBLY

designed for specific use on accumulator installation, both clamps and bracket are supplied complete with rubber support to ensure rigid mounting



VGU CHECKER/PRESSURIZER

The VGU universal pressure checker/pressurizer is the instrument definitely needed to check nitrogen filling pressure and to fill and vent the nitrogen for all accumulators on the market up to maximum working pressure of 340 bar.



Item	Description
1	Complete spare parts kit
2	Bladder complete of nitrogen valve
3	Protection cap nitrogen valve
4	Complete nitrogen valve
5	Antiextrusion strainer
6	Fixing ring