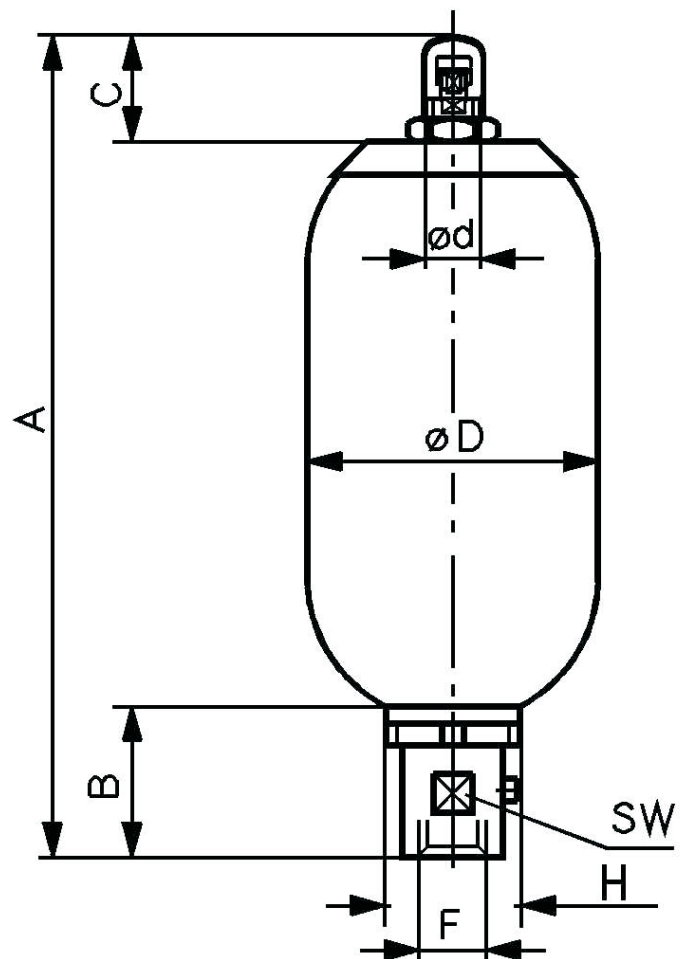


HIGH PRESSURE BLADDER ACCUMULATORS TYPE EHV

Volumes 0,2 - 50 lt

TECHNICAL DATA STANDARD EXECUTION

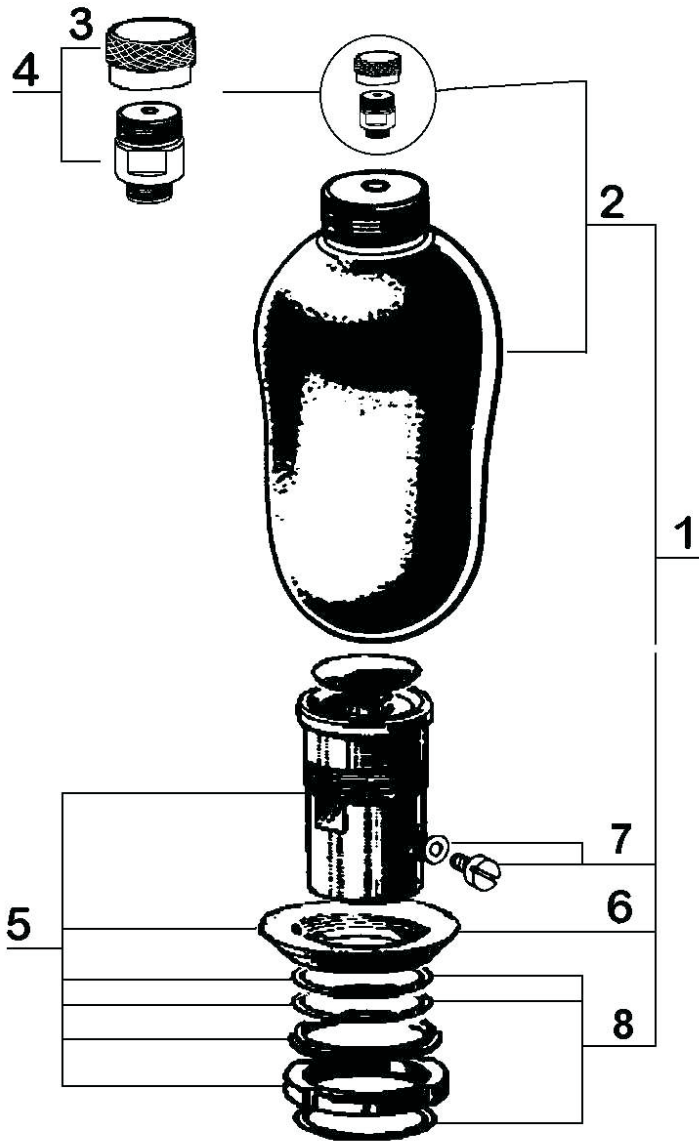
Construction	Bladder Accumulator with shell in carbon steel or inox seamless. Integral flow port and popped valve assembly with an anti extrusion ring.
Flow "Q"	Oil flow described in the table below are only for a vertical type mounted. For oil flow increase or different position mounting contact Comer.
Precharge nitrogen "PO" Fluids	Between 0.9 of P1 and 0.25 of P2 Hydraulic Oil. Special bladder materials compatible with many fluids, are available on demand.
Mounting	It is recommended in vertical position. For other positions ask Comer. Consider a space of approx. 200 mm for of charging kit type VGU over the inlet gas screw valve.
Temperature	standard -20 ÷ 80 °C. For other range ask Comer
Fixation	It is totally prohibited to weld any fixation on the shell. Fixing are at your disposal in Comer's Accessories Catalogue
Safety Blocs	DI series, realized for the safety closed and discharge from the circuit
Riductions	2"-1"; 1/2"-1/4"; 3/4"-3/8"; 1"1/4-3/4"
Certifications	"97/23/EC", "CE ", PED, ASME.
Speciali executions	Stainless Steel, Kanigen.N



Model	Volume lt	Max pressure bar	Max flow lt/min	Weight kg	A mm	B mm	C mm	D mm	d mm	F GAS	H mm	O-Ring mm	SW
EHV 0,2-350/00*	0,17	350	120	2,1	266	38	28	58	16	1/2 gcf	38	18x2	24
EHV 0,5-350/00*	0,6	350	240	2,5	258	54	27	90	16	3/4" gcf	50	21,3x2,4	32
EHV 1-350/90	1	350	240	5	326	54	65	115	22,5	3/4" gcf	50	21,3x2,4	32
EHV 1,6-350/90	1,6	350	240	7	435	54	65	115	16	3/4" gcf	50	21,3x2,4	32
EHV 2,5-350/90	2,4	350	450	10	546	66	65	115	22,5	1" 1/4 gcf	68	36,3x3	50
EHV 4-350/90	3,7	350	450	14	431	65	65	170	22,5	1" 1/4 gcf	68	36,3x3	50
EHV 5-350/90	5	350	450	17	895	66	65	115	22,5	1" 1/4 gcf	68	36,3x3	50
EHV6-350/90	6	350	450	19	557	65	65	170	22,5	1" 1/4 gcf	68	36,3x3	50
EHV 10-350/90	10	350	450	29	822	65	65	170	22,5	1" 1/4 gcf	68	36,3x3	50
EHV 10-330/90	9,2	330	900	30	583	103	65	222	22,5	2" gcf	101	54x3	70
EHV 12-330/90	11	330	900	35	683	103	65	222	22,5	2" gcf	101	54x3	70
EHV 20-330/90	17,8	330	900	50	893	103	65	222	22,5	2" gcf	101	54x3	70
EHV 24,5-330/90	22,5	330	900	53	1028	103	65	222	22,5	2" gcf	101	54x3	70
EHV 32-330/90	32	330	900	80	1418	103	65	222	22,5	2" gcf	101	54x3	70
EHV 50-330/90	48,5	330	900	100	1939	103	70	222	51	2" gcf	101	54x3	70

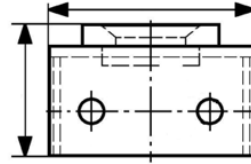
HIGH PRESSURE BLADDER ACCUMULATORS TYPE EHV

Volumes 0,2 - 50 lt



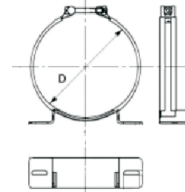
SERIAL BRACKET ASSEMBLY

designed for specific use on accumulator installation, both clamps and bracket are supplied complete with rubber support to ensure rigid mounting



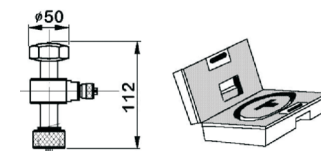
SERIAL CLAMP ASSEMBLY

designed for specific use on accumulator installation, both clamps and bracket are supplied complete with rubber support to ensure rigid mounting



VGU CHECKER/PRESSURIZER

The VGU universal pressure checker/pressurizer is the instrument definitely needed to check nitrogen filling pressure and to fill and vent the nitrogen for all accumulators on the market up to maximum working pressure of 340 bar.



Item	Description
1	Complete spare parts kit
2	Bladder complete of nitrogen valve
3	Protection cap nitrogen valve
4	Complete nitrogen valve
5	Antiextrusion complete spare kit
6	Rubber ring
7	Drain nut & seal (if present)
8	Complete gasket spare kit