

SOLENOID VALVE FOR STEAM & HIGH TEMPERATURE TYPE 6013

2/2 way - 0 ÷ 16 bar - 1/4" ÷ 3/8" Threads - Temperature Max 180 °C - Normally Closed

Modular direct acting solenoid valve system with brass body and stainless steel seat. For neutral gases and liquids, high temperatures such as hot water, steam, hot air, thermal oils.
Applications: heating, sterilizing, impregnating.

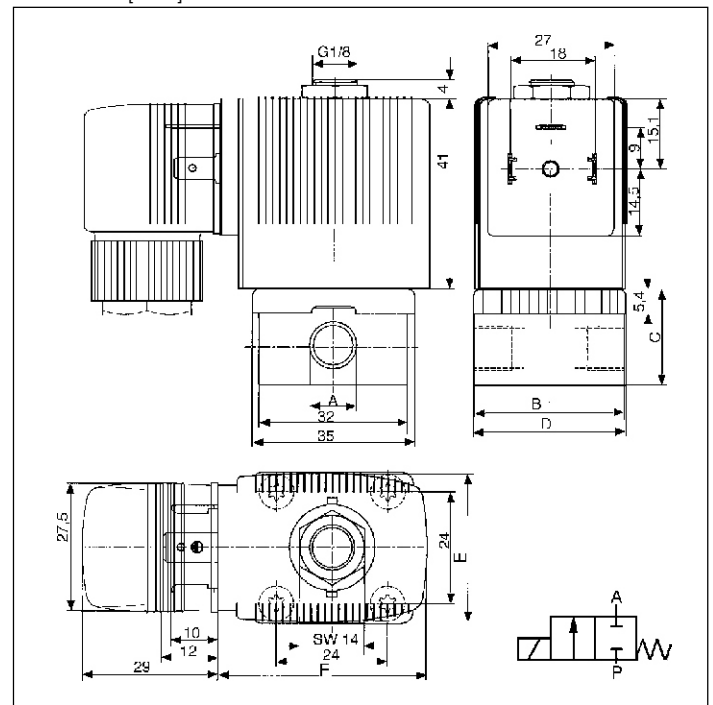
Technical data

Pressure ranges	0-16 bar
Temperature media	-10 ÷ +180 °C
Ambient temperature	+55 °C, max
Body material	Brass
Gasket material	Stainless steel
Coil material	Epoxy
Power consumption	32 mm coil: DC 8 W AC: 24 VA (inrush), 17 VA (hold) 40 mm coil: DC 10 W AC: 30 VA (inrush), 22 VA (hold)
Cable plug	IP 65 (standard delivery) Cable plug DIN 43 650 A)

Options

- Version up to 120 °C with Epoxy coil and EPDM seal

Dimension [mm]



Variable dimensions [mm]

Coil	A	B	C	D	E	F
32 mm	G 1/4	46	26.8	49.0	32	45
40 mm	G 1/4	46	26.8	49.0	40	51
40 mm	G 3/8	50	39.8	49.0	40	51

SPECIFICATIONS

Threads	Orifice	Kv-value (Water)	Pressure ranges		Weight
			(AC)	(DC)	
[Inch]	[mm]	[m ³ /h]	[bar]	[bar]	[g]
G 1/4	2.0	0.12	0-16.0	0-12.0	360
G 1/4	3.0	0.23	0-14.0	0- 8.0	360
G 3/8	3.0	0.23	0-14.0	0- 8.0	500

ORDERING CODE

With standard cable plug 0-250 V AC/DC

Voltage / Frequency [V/Hz]				
24/DC	24/50	110/50	230/50	
136 015 C ¹⁾	136 016 D ¹⁾	136 017 E ¹⁾	136 018 P ¹⁾	
136 019 Q ²⁾	136 020 M ²⁾	136 021 A ²⁾	136 022 B ²⁾	
136 023 C ²⁾	136 024 D ²⁾	136 025 E ²⁾	136 026 F ²⁾	

¹⁾ 32 mm coil, 8W; ²⁾ 40 mm coil, 10W

- ✓ Fluid temperature up to 180° C
- ✓ Erosion resistant
- ✓ High-quality seal material
PTFE (Teflon) standard
- ✓ Medium is only in contact with
The valve internals and body