

PADDLE FLOW INDICATORS TYPE FPL

Water - Clean fluids - Pipe 1" ÷ 8" - Threads 3/8" ÷ 1" - SPDT Contact

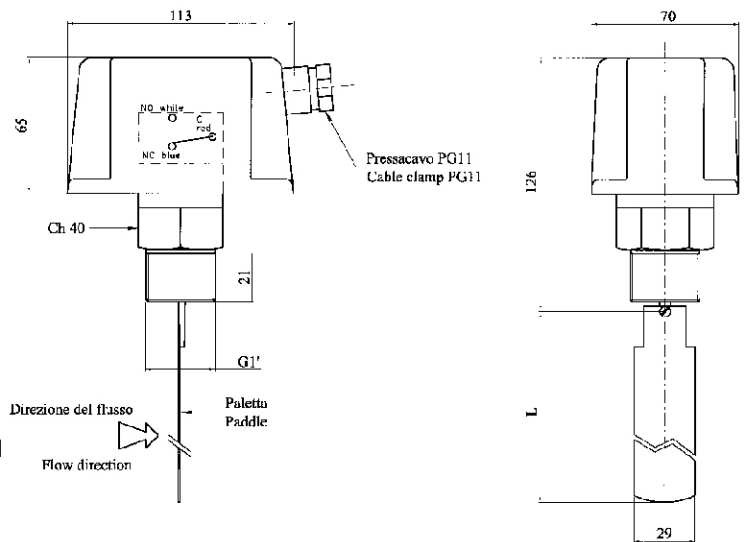
TECHNICAL DATA

Fluids	Water and clean fluids
Working temperature	-40 ÷ 85 °C
Max. Fluids temperature	110 °C
Max. Pressure	Brass 11 bar, Stainless steel 30 bar
Max. Voltage	250 Vac
Contact	1 SPDT
Current	15 A (resistive) 8 A (inductive)
Protezione	IP 65
Threads	1" Gas Male (process)
Mounting	Straight pipeline 5 times distance of diameter

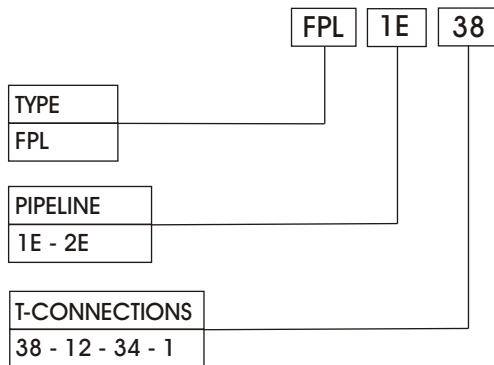
MATERIALS

Junction box	ABS
Body	Brass or AISI 316 stainless steel
Base	Tropicalized steel
Paddle	AISI 316L stainless steel

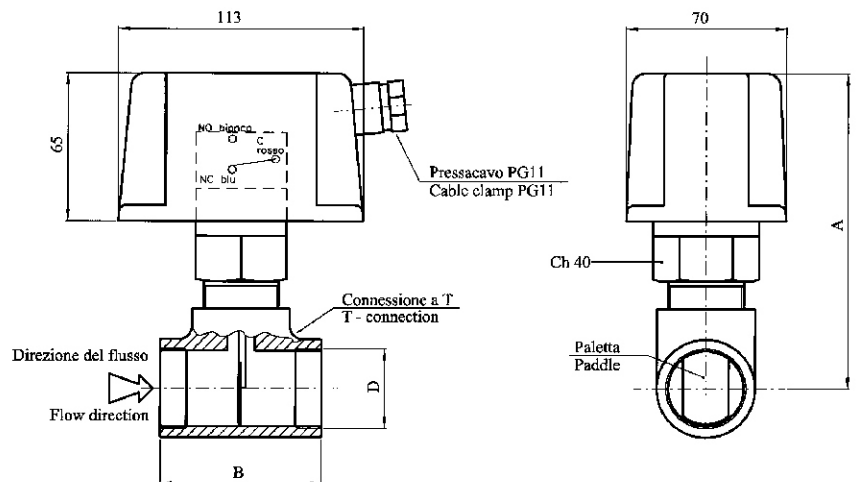
FPL-1E-2E-1RE-2RE



ORDERING CODE



FPL-1E-38-12-34-1-114-112-2-3



Model	Pipeline	Min. Flow rate	Max. Fow rate	Max. Pressure	Body
FPL-1E	1"	1 mq/h	2,1 mq/h	11 bar	Brass
FPL-2E	8"	46,5 mq/h	94,2 mq/h	30 bar	S. Steel
FPL-1RE	1"	1 mq/h	2,1 mq/h	11 bar	Brass
FPL-2RE	8"	46,5 mq/h	94,2 mq/h	30 bar	S. Steel

Model	Pipeline	Min. Flow rate	Max. Fow rate	Max. Pressure	Body
FPL1E38	3/8"	7 lt/min	15 lt/min	11 bar	Brass
FPL1E12	1/2"	10 lt/min	20 lt/min	11 bar	Brass
FPL1E34	3/4"	20 lt/min	30 lt/min	11 bar	Brass
FPL1E1	1"	25 lt/min	60 lt/min	11 bar	Brass
FPL1E114	1"1/4	30 lt/min	80 lt/min	11 bar	Brass
FPL1E112	1"1/2	40 lt/min	90 lt/min	11 bar	Brass
FPL1E2	2"	50 lt/min	210 lt/min	11 bar	Brass
FPL1E3	3"	120 lt/min	440 lt/min	11 bar	Brass