

THERMOWELLS TYPE TF-TFL-BF-BFL

Standard materials St. Steel AISI36, Hastelloy C - Max. Temperature 600 °C - Threads and Flanged Connections

THERMOWELLS

Thermowells are used for any type of plants in order to protect every temperature gauge (thermocouples, thermoresistances, bulbs of thermometers) from corrosive substances, high flow speed and mechanical efforts; they are indispensable to permit the removal of the gauge while the line in which they are installed is in use.

DESIGN FEATURES

TYPE:
 TF from pipe with threaded connection
 TFL from pipe with flanged connection
 BF from bar stock with threaded connection
 BFL from bar stock with flanged connection

MATERIALS: Stainless Steel AISI 316.
 Other materials on request.

INSTRUMENT CONNECTION: (f) female thread G1/2 – 1/2NPT: (f)

PROCESS CONNECTION: (F) male thread or flange

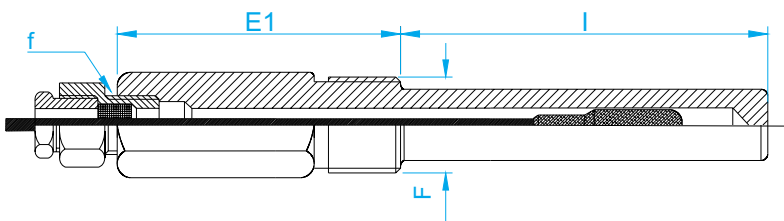
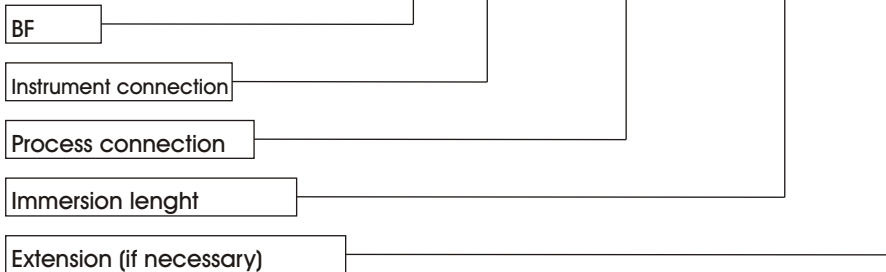
IMMERSION: (l) lenght on request
 It is the part immersed in the fluid; it is placed between the connection at the process (thread or flange) and the end of the stem.

EXTENSION: (E1) specify as option
 Part of the thermowell between the fixing key and the connection to the process; it has the purpose to distance the thermometers from the process especially with high temperatures.



ORDERING CODE

BF 1/2G DN20PN100 250 mm E110



Special executions are available on request or drawings

ATTENTION

- When choosing the thermowell, it is necessary to foresee that the length of sensible part of the gauge (bulb) is always shorter than the immersion length, so that the sensible part is completely immersed in the process fluid.
- When installing the gauge make sure that thermic exchange between the thermowell and the sensible part of the thermometer (bulb) is warranted by the filling of the air film with mineral oils, metallic powders, etc..

RATINGS

For fluid speed up to 50 m/s

Material AISI 316	Max. Temperature °C				
	100	300	400	500	600
Type	Max. pressure bar				
From pipes	70	60	50	45	40
From bar stock	160	150	130	100	60

THERMOWELLS TYPE TF-TFL-BF-BFL

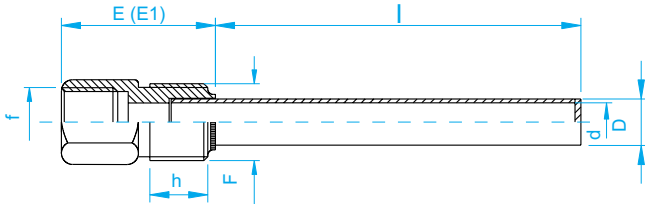
Standard materials St. Steel AISI36, Hastelloy C - Max. Temperature 600 °C - Threads and Flanged Connections

THERMOWELLS FROM PIPE TF - TFL

Pipe Dimensions
Instrument connection
Immersion

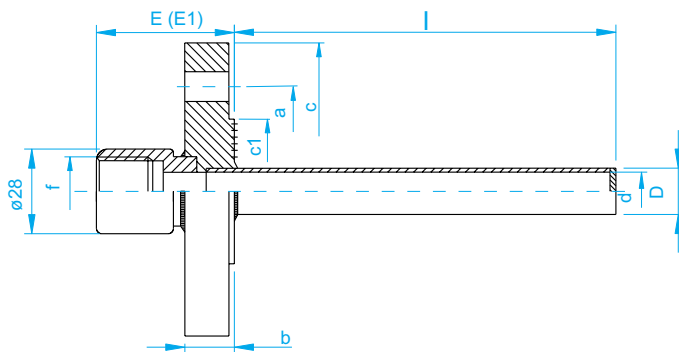
D x d 14 x 12 mm
f G 1/2" F - 1/2" NPT F
l on request

THREADED CONNECTION TF



F	[mm]		
	h	E	E1
G 1/2	20	45	100
G 3/4	20	45	100
G 1	25	45	100
1/2 NPT	20	45	100
3/4 NPT	20	45	100
1 NPT	25	45	100

FLANGED CONNECTION TFL



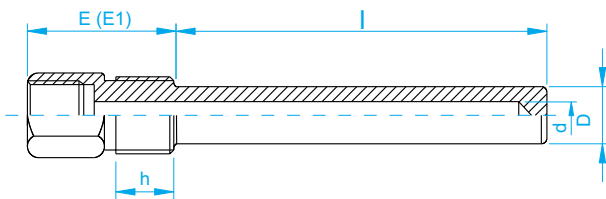
Type		[mm]					
		a	b	c	c1	E	E1
UNI 2223 2229	DN20 PN40	75	18	105	58	50	100
	DN25 PN40	85	18	115	68	50	100
	DN40 PN40	110	18	150	88	50	100
ANSI B 16.5	1/2" 150 RF	60,5	11	89	35	50	100
	1" 150 RF	79	15	108	51	50	100
	1 1/2" 150 RF	98,5	18	127	73	50	100

THERMOWELLS FROM BAR STOCK BF - BFL

Dimensions
Instrument connection
Immersion

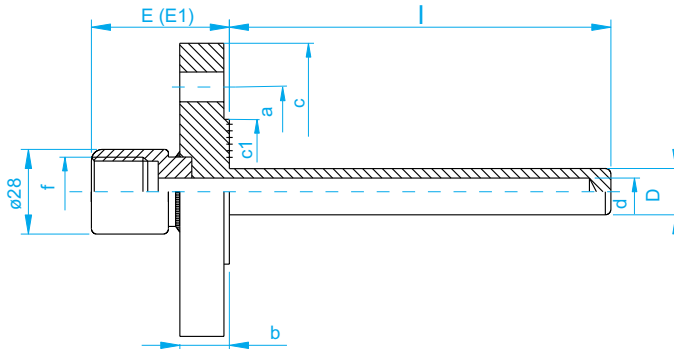
D = 18 mm d = 13 mm
f 1/2 NPT F G 1/2 F
l On request

THREADED CONNECTION BF



F	[mm]		
	h	E	E1
G 1/2	20	45	100
G 3/4	20	45	100
G 1	25	45	100
1/2 NPT	20	45	100
3/4 NPT	20	45	100
1 NPT	25	45	100

FLANGED CONNECTION BFL



Type		[mm]					
		a	b	c	c1	E	E1
UNI 2223 2229	DN20 PN100	90	22	130	58	50	100
	DN25 PN100	100	24	140	65	50	100
	DN40 PN100	125	26	170	85	50	100
ANSI B 16.5	1/2" 1500 RF	82,5	23	120	35	50	100
	1" 1500 RF	101	29	150	51	50	100
	1 1/2" 1500 RF	124	32	178	73	50	100