

PADDLE-WHEEL FLOW SENSOR/SWITCH ON/OFF CONTROL TYPE 8032

G 1/2" ÷ G2" - DN 15 ÷ 50 - PN 16 - Brass / Stainless Steel body

This paddle-wheel flow sensor/switch is specially designed to Switch a valve and establish an ON/OFF control loop. The switching point can be programmed with the 3 key pads On the display or can optionally be programmed externally from A programmable logic controller over a 4...20 mA loop. The connection to the process in the piping is done with the "Easy to connect" quarter-turn technique of the INLINE fittings.

Process specifications

Pipe diameter	DN 15...DN 50
Measuring range	0.2 m/s ÷ 10 m/s
Accuracy	± 1%
Repeatability	0.4%
Fitting S030	Bürkert INLINE, Brass / S. Steel PC+20% glass fibre
Front panel foil	Polyester
Sensor element	Paddle-wheel
Wetted parts	PVDF, ceramic, FPM standard (EPDM option)

Electrical specifications

Voltage supply	12...30 VDC
Reversed polarity of DC	Protetta da inversione
Transistor output	NPN and PNP open collector 5...30 VDC, 700 mA

On request	
Relay output	A/250 VAC, o 3 A/30 VDC; Programmable

Input external setpoint	4...20 mA
AS-interface	Field bus
Current consumption	max. 80 mA (no load)
Short circuit protection	yes
Recommended max cable length	100 m shielded
For voltage supply	section 0.14...0.5 mm ²

Electrical connections

Multipin	5 pin, M12
Ease On	cable plug 2511 (on request)
Cable plug	2508, DIN 43650A (on request)
ASI connection	on request

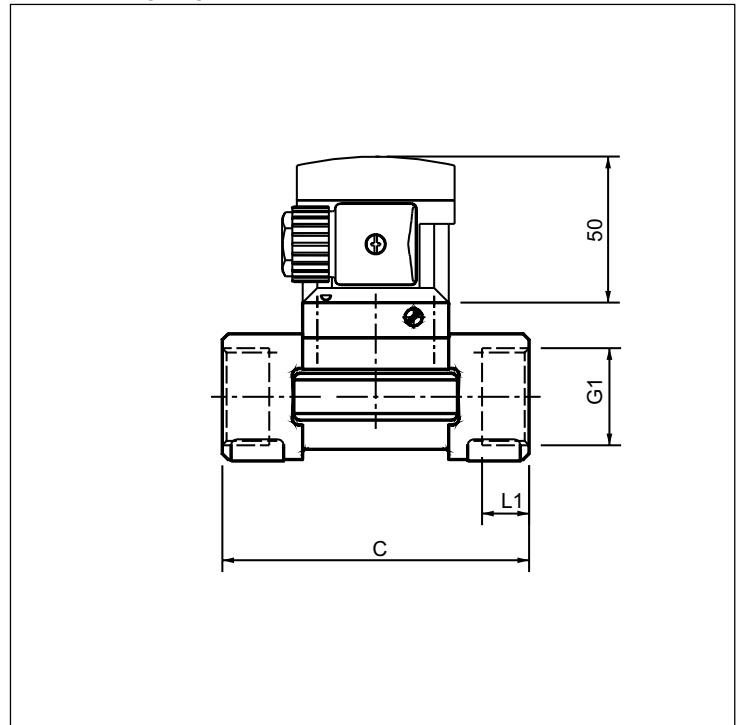
Environment specifications

Temperature fluid max.	100 °C
Ambient temperature range	0...+60 °C
Fluid pressure max	PN 16
Protection	IP 65 With cable plug in

Standards

EMI	EN 50081-1, 50082-2, 61010-1
-----	------------------------------

Dimensions [mm]



Dimensions [mm]

DN	C	G1	L1
15	85.0	G 1/2	16.0
20	95.0	G 3/4	17.0
25	105.0	G 1	23.5
32	120.0	G 1 1/4	23.5
40	130.0	G 1 1/2	23.5
50	150.0	G 2	27.5

- ✓ ON/OFF control system for Switching applications
- ✓ Programmable ON/OFF control System for easy fluid control System
- ✓ Complete communication thanks To external set-point LINK Or AS-Interface



SPECIFICATIONS

Voltage Supply	Output	Connector	Threads
12-30 VDC	NPN / PNP	M12 plug, 5 pin	G - internal

ORDERING CODE

DN	Brass code	S. Steel body
15	442 881 R	442 899 T
20	442 882 J	442 900 G
25	442 883 K	442 901 V
32	442 884 L	442 902 W
40	442 885 M	442 903 X
50	442 886 N	442 904 Y

ACCESSORY (to be ordered separately)

Description
5 pin M12 female connector moulded on cable (2m, shielded)

ORDERING CODE

Code
438 680 F