

CSFP33 - CSFP33S

DESCRIPTION:

The combinable probe series CSF33 was studied for satisfy the several request for controls of levels in FUEL, DRINJING WATER, GREY WATER and BLACK WATER TANK.

This probe allows to use only one code, wich can be customized, in a very short time, from the manufacturer in according to the size of tanks used in his line of boat.

The probe is manufactured in 2 main parts:

The mechanical part consists in a tube made in 316 Stainless Steel, welded with a flange in 316 SS with 6 holes. The sensor part consists in a pressure transducer self programmable.

The connection from the 2 parts is made through a joint compression.

The standard legth of tube is 1,70 mt. On request we can supply tube longer than 1,70 mt. This system allows to cut the tube as the lengthens required, to connect il the pressure transducers with the joint compression, and adjust the output of the transducer with one converter connected to a lap top.

With one converter you can modify t he output of every transducers in your hand. the software is supplied with the converter.

TECHNICAL FEATURES:

Tube, Flange and sensor in 316 Stainless Stel

Standard length of tube 1,70 mt.

Flange diameter 100 mm.

Flange with N° 6 holes diam. 6,5 mm.

85 mm between each hole (other on request)

Electrical connection with gland

Joint compression



CSFP33 - CSFP33S

PROGRAMMABLE SENSOR TYPE 33X Ei

- Working range: 0...2 mH2O
- Overpressure: 2 bar
- Output: 4...20 mA (2 wires) + RS485, 0...10 V, RS485
- Supply: 10...28 Vdc
- Accuracy (-10...80° C): ± 0,15% FS
- Working temperature: -40...100° C (-10...80°C Compensate)
- Electrical Connections: wire 7 meters (with PTFE compensation air tube)
- Protection: IP 68
- Process Connection: Threads 3/4" or 1/2" gas male
- Standard process connections with external diaphragm
- Wetted parts: AISI 316L Stainless Steel
- Classification: II1 G EEx ia IIC T6 to T4
- Conformity Declaration: KEMA 04 ATEX 1081 X
- Other features: see 33X technical documentation

FEATURES

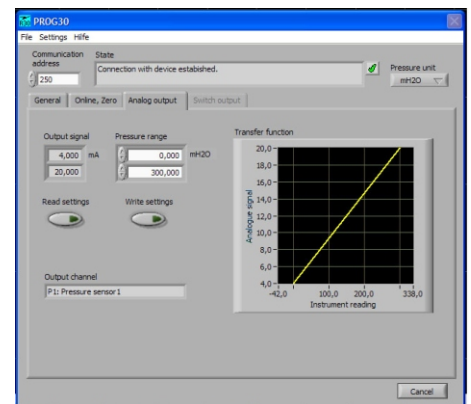
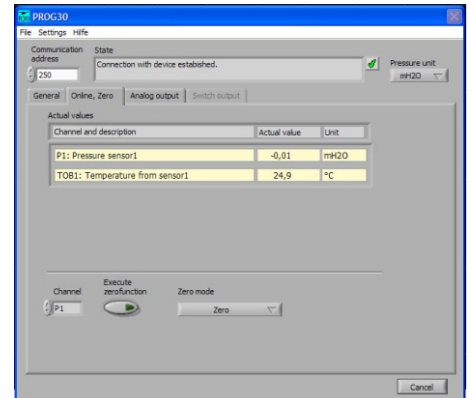
The software enables the configuration of the pressure transmitters depending on the model chosen. It can be configured for tanks with more or less irregular drawing. The connection to the PC is made with a USB port, and then practically universal. The two sensors available, differ in the programming parameters. The version CSFP33 allow to set the zero and the full scale. It's used for tanks with regular forms or structural tanks with irregular drawing, when the linearization high/volume is done through automation board controls (see pic 1 and 2).

The CSFP33S version, allow to set the zero point, the full scale, and modify the linear curve in 8 points. It's used on structural tanks where is not possible to modify the curve through automation board (see pic. 3 and 4).

SOFTWARE and CALIBRATIONS KIT:

- Software READ30/PROG30 V2.8
- Driver K-104 USB
- CaBLE K-104A

Pic.1 and 2



Pic.3 and 4

